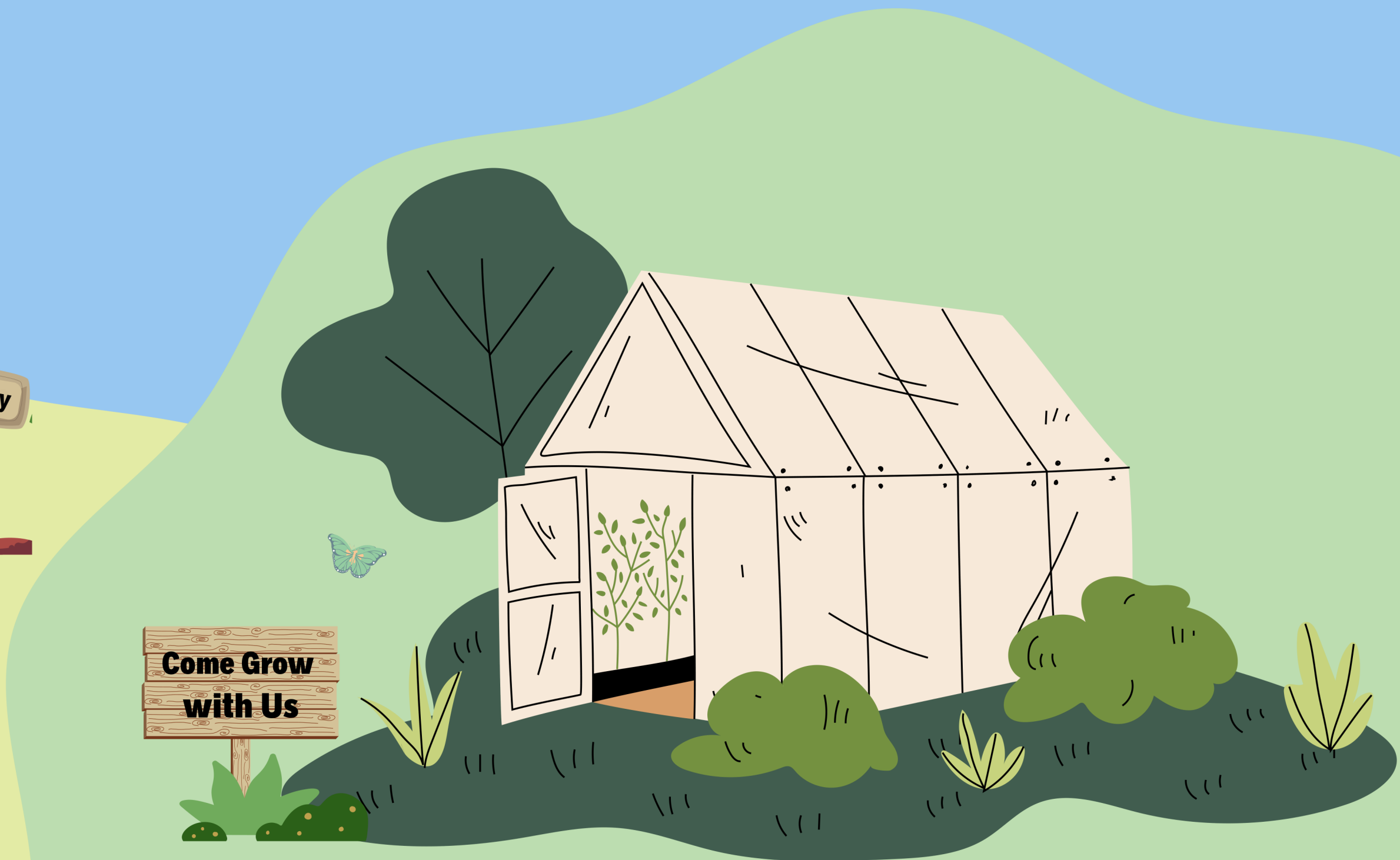




Healthy Seminarians + Healthy Churches = A Healthier World!



Strategic Plan 2022-2025





Purpose of Strategic Plan

Healthy Seminarians-Healthy Church's Strategic Plan provides a framework that has the structural integrity to hold up over time yet can be easily adapted to address the ever-evolving needs of those with whom we minister and serve.

Healthy Seminarians-Healthy Church's Strategic Plan was adopted by its Board of Directors in December 2022.

Letter from HSHC Co-Founders

Welcome to our garden... our virtual garden that is! But wait, isn't this supposed to be a strategic plan? What does this have to do with the organizations programmatic, administrative, and financial goals? Or your mission of building up the wellbeing of seminarians, clergy, and congregations? Everything!

Just as the world has been rapidly changing, especially in the last several years due to a variety of different factors, we as an organization have been growing and cultivating new ways of being, particularly in our approach to teaching and disseminating wellness information.

Let's face it, working on our collective wellbeing is challenging. However, what we have noticed when discussing - in a sermon, educational class/workshop, or a casual conversation - the various aspects of health as being like working on the different parts of a metaphoric garden, this tends to put people more at ease (whether the person has a green thumb or not) and is far more playful. Plus, Jesus used a lot of agricultural imagery in his teaching and preaching to great effect, so it only makes sense to follow the Master (Gardener)!

Ultimately, this garden has been designed in the humble recognition that there is nothing we can do to make plants grow; only God can do that. However, what we can do, and what we are committed to doing, is creating the best environment for healthy growth to occur... planting seeds, nurturing seedlings, and harvesting and sharing the fruits of our collective labor with the world around us.

We invite you to come and grow with us,
Karen and Travis Webster

Overview:

Healthy Seminarians-Healthy Church is deeply committed to helping seminary communities and churches connect their theology to their own health and that of their families, communities, and the world.



Our Mission:

To equip seminarians, clergy, and church leaders to explore practical ways of living into greater health and wholeness through education, research, and advocacy.

Values Statement:*

We are committed to exploring, embodying, and educating theologically and scientifically grounded wholeness.

Vision Statement:*

- We recognizes that seminarians and clergy struggle disproportionately with mental, emotional, and physical health issues.
- We are committed to breaking this cycle of unhealth.
- Through our efforts to educate and bring awareness of how to change this reality, we can help church leaders become agents of positive transformation in their communities.

* The full version of these can be found in the "About Us" Section of this website.

Garden Design

As part of our strategic plan design process, we thought about each of our garden plots (what is growing in them) and then laid them out similarly to how one would design a small homestead garden.

Zone 0 (where the greenhouse - our organization - resides): It is a place where all are welcome to come, learn, and explore what it means to be healthy in the context/the vocation to which God has called them. It is also a space to find a community of support for those who are striving for greater health in their own lives as well as in the world.

Zone 1 (Programmatic and Administrative): This is the area closest to the greenhouse. Garden plots in this area need to be attended to with the most frequency.

Zone 2 (Financial & Board of Directors): These garden plots are a bit further away from the greenhouse. They are just as important as the garden plots growing closer to the greenhouse, but in general, they do not have to be tended to as often.

Wild Zone: We do not expend energy to maintain this space, but rather have intentionally kept it wild. This metaphorical natural space has been set aside as a place where people can spend time with God – through prayer, meditation, relaxation – so that God can move among them and teach them something new about themselves, our communities, and our world.

Planting Chart



Seeds =
something new

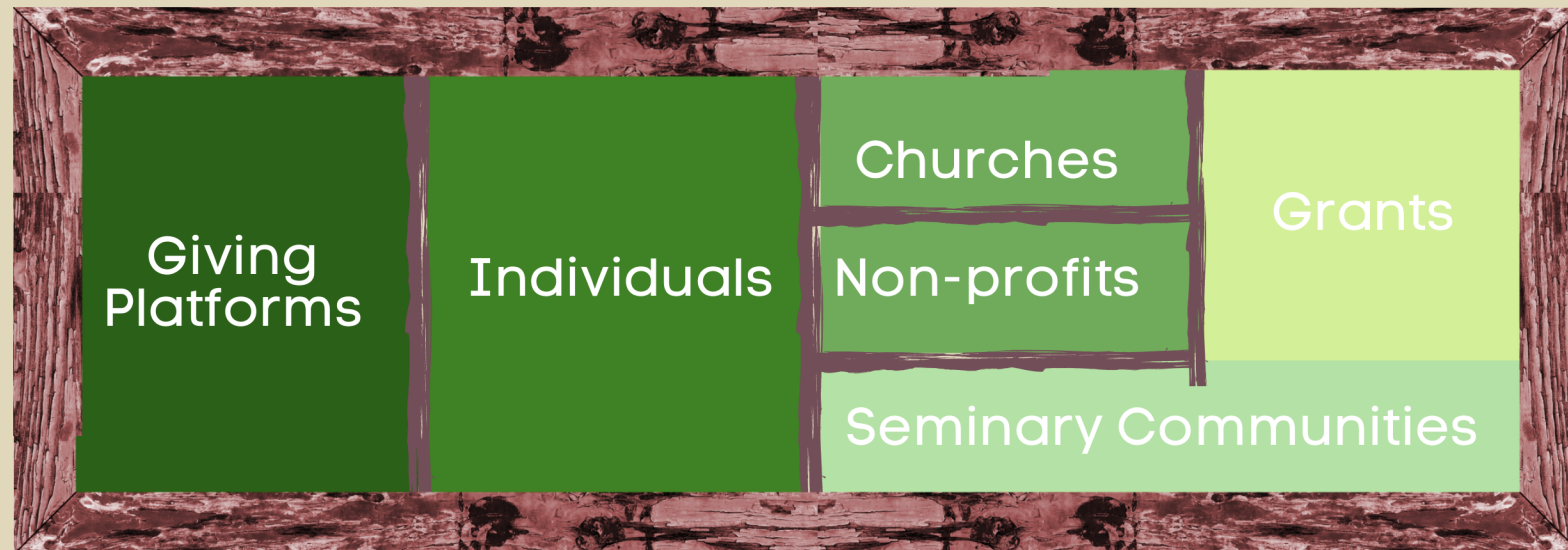
Seedlings =
cultivated,
but still plenty of
room to grow



**Fruit, Vegetables, and
Flowers =** have come into
fruition and are ready
for evaluation



Financial



Board of Directors



Administrative



Programatic





What is Being Cultivated in Our Programmatic Plots



Planting Chart



Seeds =
something
new

Seedlings =
cultivated,
but still plenty of
room to grow



**Fruit, Vegetables, and
Flowers** = have come into
fruition and are ready
for evaluation



Goal #1: Increase our organizational reach and effectiveness through expanding what we offer seminaries, divinity schools, denominations, and congregations by...

1. Continuing to conduct theologically and scientifically trustworthy research that informs our work.
2. Seeking to publish - our first book (based on dissertation findings); articles for scholarly journals, and subsequent book(s) with more in depth foci.
3. Developing curricula such as a new online, self-paced course and Open Educational Resources for academic and congregational utilization, while also continuing to provide annual health campaigns.
4. Increasing speaking opportunities where we can advocate for seminarians, young clergy, and congregations in achieving enduring wholeness and abundant life.

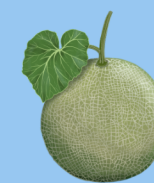
1. Research



2. Publications



3. Curricula

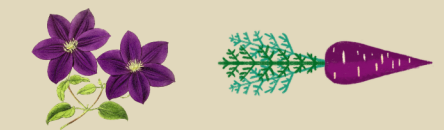


4. Advocacy





Currently Growing in Our Administrative Plots



Planting Chart



Seeds =
something
new

Seedlings =
cultivated,
but still plenty of
room to grow



**Fruit, Vegetables, and
Flowers** = have come into
fruition and are ready
for evaluation



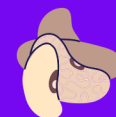
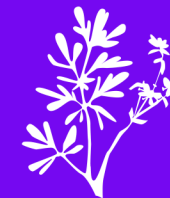
Goal #2: Develop and implement best practices in our organizational systems and processes in the following areas...

1. Developing a new website (while maintaining current website).
2. Increasing our online presence and connection with our donors.
3. Clarifying staffing needs and expectations to match organizational growth.
4. Continuing to establish (and maintain) organizational best practices.

1. Website



2. Donor Relations



3. Project Consultants



4. Misc.



What is Ripening in Our Financial Plots

Planting Chart



Seeds =
something
new

Seedlings =
cultivated,
but still plenty of
room to grow



**Fruit, Vegetables, and
Flowers** = have come into
fruition and are ready
for evaluation



Goal #3: Increase financial sustainability and transparency through...

1. Holding fundraising events.
2. Widening our individual donor base.
3. Expanding congregational support.
4. Identifying and applying for grant opportunities.

1. Giving Platforms



2. Individuals

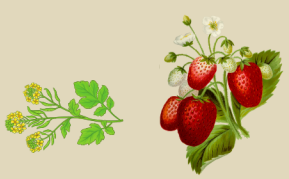


3. Institutions

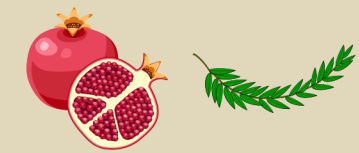


4. Grants





What is Being Sown in the Board of Directors Plot



Planting Chart



Seeds =
something
new

Seedlings =
cultivated,
but still plenty of
room to grow



**Fruit, Vegetables, and
Flowers** = have come into
fruition and are ready
for evaluation



Goal #4: Expand and cultivate the Board of Directors through ...

1. Creating a more balanced board representation that enhances the current leadership.
2. Developing an ethos of active participation through equipping and encouraging board members to use their personal gifts and networks to further HSHC's work.





Healthy Seminarian-Healthy Church

4600 Old William Penn Hwy

Murrysville, PA, 15668

Phone: 470-228-1682

E-mail: info@thehshc.org

Web site: www.thehshc.org